



# Socorro County

May 2, 2012

Delilah Walsh, County Manager

# County Description

- Socorro County is one of 33 counties in the State of New Mexico
- Established in 1852
- Encompasses approximately 6,646 square miles.
- Share borders with Sierra, Valencia, Torrence, Cibola, Catron and Lincoln Counties.
- City of Socorro
- Village of Magdalena
- Colonias – San Antonio



# Elevation & Landscape

- Socorro County ranges in elevation from approximately 4,528 ft. on the banks of the Rio Grande to 10,784 ft. at the top of South Baldy Peak in the Magdalena Mountains. Socorro is home to several mountain ranges and sky islands.
- Landscape features national forests, farmland of the Rio Grande, plains of San Augustin, Chihuahuahua Desert



# County Structure

- Socorro County is governed by the five-member Board of County Commissioners.
- Five Offices are held by additional elected officials:
  - County Sheriff
  - County Clerk
  - County Treasurer
  - County Assessor
  - Probate Judge

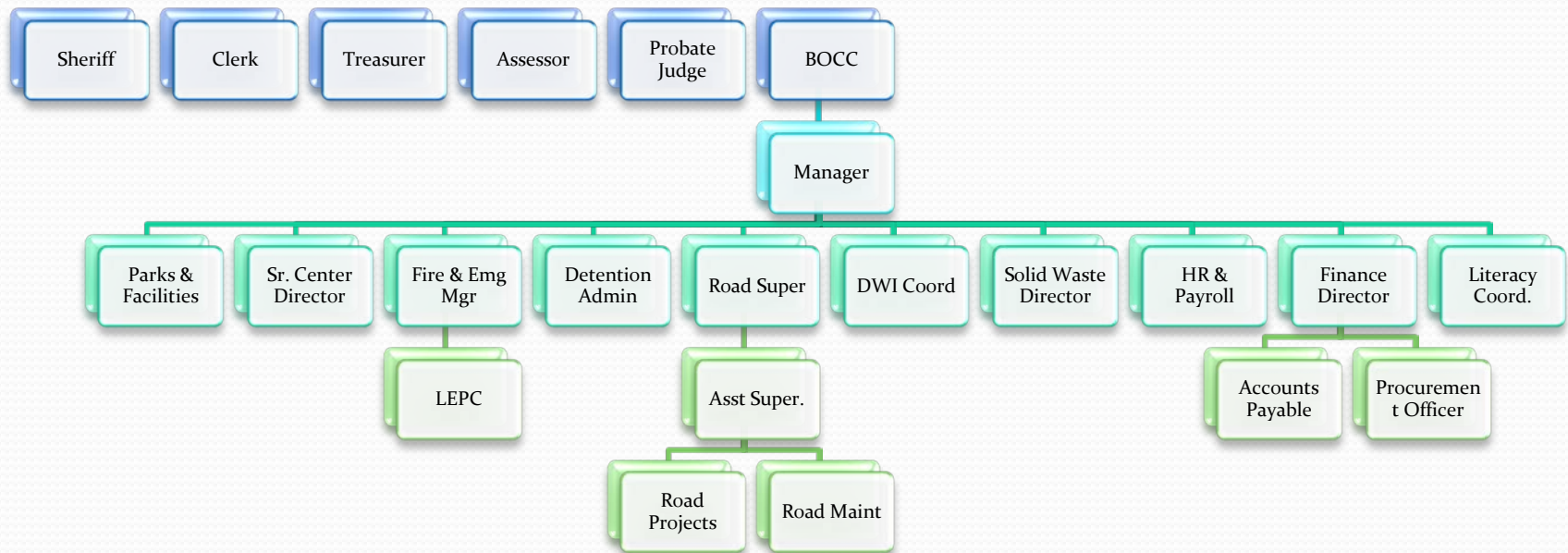


# Administration Responsibilities

- Budget & Finance
- Human Resources
- Roads maintenance
- Parks & Recreation
- Senior Centers
- Emergency Services
- Flood Plain Management
- Rural Addressing & Mapping
- Volunteer Fire Departments
- Detention Center
- DWI & Misdemeanor Compliance Office
- Literacy Volunteers Program
- Solid Waste Management
- Land Use Commission



# Organizational Chart



# Land Ownership

- Approximately 50% of Socorro County is federally-owned land which includes
  - Cibola National Forest
  - Gila National Forest
  - Bosque del Apache Wildlife Refuge
  - Sevielleta Wildlife Refuge
  - BLM range lands
- Approximately 10% of the County is state-owned land



# Property Tax Base

- The largest tax base is primarily along the Rio Grande River Valley.
- The northwestern portion of our County is dedicated as the Alamo Navajo and Acoma Indian Reservations.
- Majority of fee land outside of the River Valley is used for and taxed as grazing land.





# Population & Growth

- The 2010 Census estimates our population at 17,866
- A decline of more than 200 since the 2010 count of
- Population shift has occurred to the northern part of the County
- Factors effecting have been expansion at the National Radio Astronomy Observatory, Newtech, and New Mexico Tech.
- Most residents in the northern part of the County work in Valencia or Bernalillo County



# Major Industries

- New Mexico Institute of Mining & Technology
- National Radio Astronomy Observatory's Very Large Array
- Magdalena Ridge Observatory
- Bosque del Apache and Sevilleta Wildlife refuges
- White Sands Missile Range
- Considerable cattle ranching
- Farming & agriculture
- Dairy farms



# Major Employers

- New Mexico Tech
- NRAO/VLA
- Socorro Consolidated Schools
- Magdalena Schools
- Alamo Navajo School Board
- WSMR
- City of Socorro
- County of Socorro
- Socorro General Hospital
- Socorro Electric Cooperative
- State of New Mexico



# County Infrastructure Goals

- Health Care Center in North
- Parks & Recreation
- Road Improvements
  - We currently maintain 1287 miles of roads (55 miles are chip-sealed), 5 bridges & 56 miles of forest roads
- Flood Prevention
- Fire & Emergency response infrastructure
- Illegal Dumping Abatement
- Development of a Comprehensive Land Use Plan
- Technology Infrastructure



# Outdoor Tourism

- Bosque del Apache National Wildlife Refuge and Sevilleta National Wildlife Refuge where visitors can learn more about our area's habitat and wildlife.
- We have excellent rock climbing, trail, hunting and fishing opportunities in our forests and along the Rio Grande Valley.
- The National Radio Astronomy Observatory's Very Large Array is also open to visitors interested in learning more about radio astronomy and exploration of our stars. Our open skies are also idea for observing by amateur astronomers.



# Historical Tourism

- El Camino Real International Heritage Center
- Fort Craig
- The ruins at Gran Quivira and Abo in the Salinas National Monument
- Socorro Plaza/San Miguel Church



# Accommodation Industry

- NMT International First Responders Training
- New Mexico Firefighters Training Academy
- Visitors to Bosque del Apache's Festival of the Cranes
- Central meeting location
- Hunting & Fishing



# Economic Dependencies

- Cuts to federal programs have a direct and significant economic hit on the community
  - DOE & DOD testing at NMT & WSMR
  - NSF funding at NRAO & NMT
- Socorro County is heavily dependent on PILT (Payment in Lieu of Taxes) funds, they make up over 20% of our general fund budget.
- SRS /Forest funds account for approximately 25% of our road fund.





# Military Compatibility

- WSMR & Contractors provide some of the higher-paying jobs in the community
- Oryx hunts on WSMR draw many out-of-town and out-of-state game hunters and their guides.
- Socorro County inputs all Range Rider reimbursement report for payment.
- Maintaining relationships with constituent ranchers
- Military use ensures adequate maintenance of state roads used by constituents



# JLUS Economic Considerations

- Development of County Roads
- Development of transmission lines in the County
- Consideration of business parks located on the outside of each entrance to WSMR so that vendors and contractors can establish taxing revenue for companies that travel far distances to work inside WSMR.
- Including Spaceport America in any long-term strategy development with Adventure Tourism, Business Park and Industrial Recruitment



# Economics cont. . .

- Continue the development of a Socorro County Regional Airport that works within the Airspace of WSMR and its mission in research and testing.
- Implement a New Mexico Film Office Liaison to all film locations in Socorro County for Film Tourists (including WSMR or any Federal, State and private lands that the public is interested in seeing) Socorro County
- Continued Oryx Hunts on Range



# Economics cont. . .

- Expansion of employees reporting to the north gate on Hwy 380
- Ensure Construction Gross Receipts are rendered with the County's 25-025 location reporting code.



# Questions

